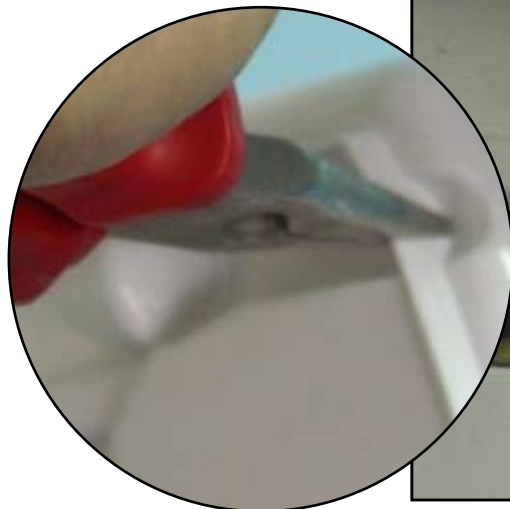


Step 1



Step 2

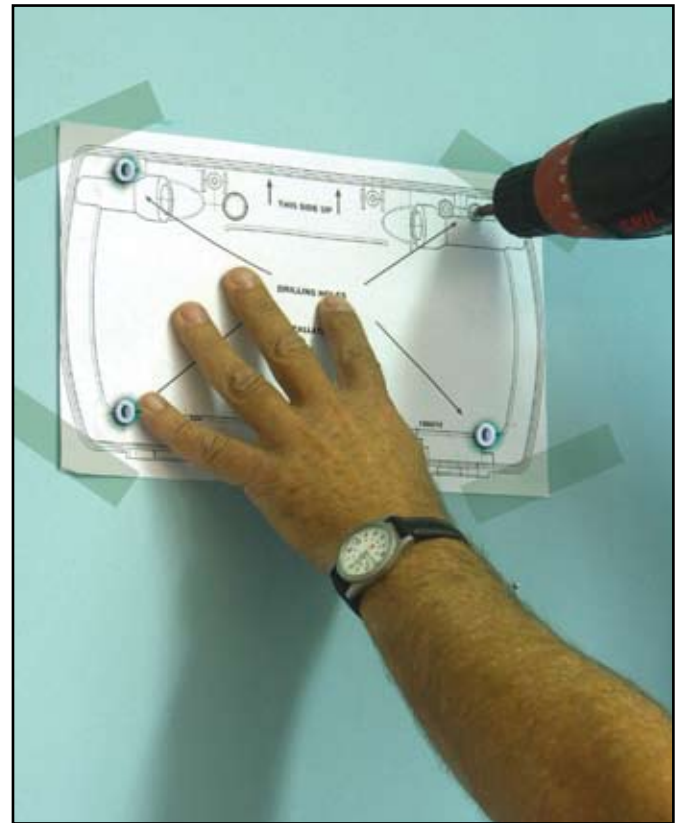
Open the entrance cable in the back of the unit.
Be sure to open the side of the cable



Step 3

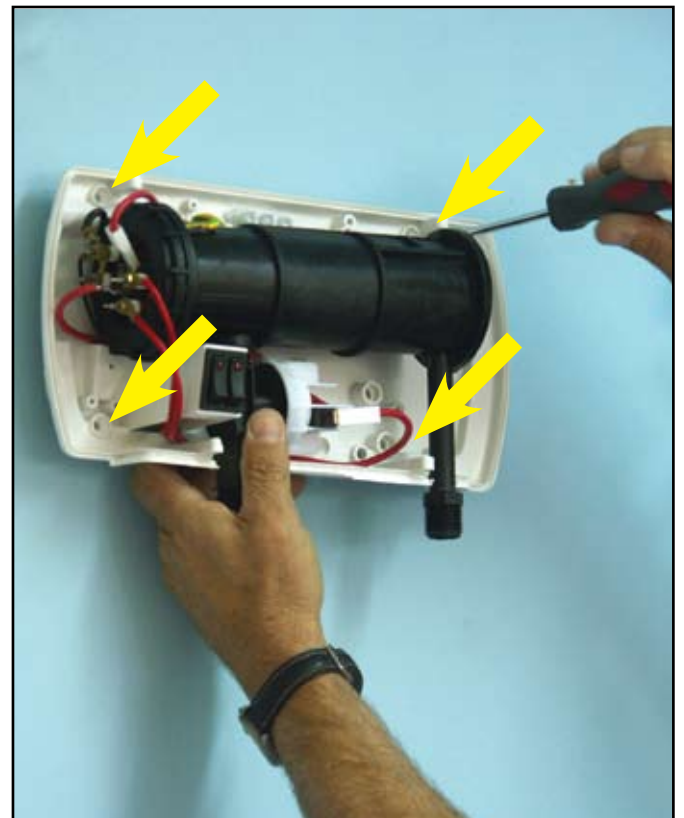
Find the optimal place for all users and stick the drilling hole template to the wall.

Drill 4 holes and insert Plugs.



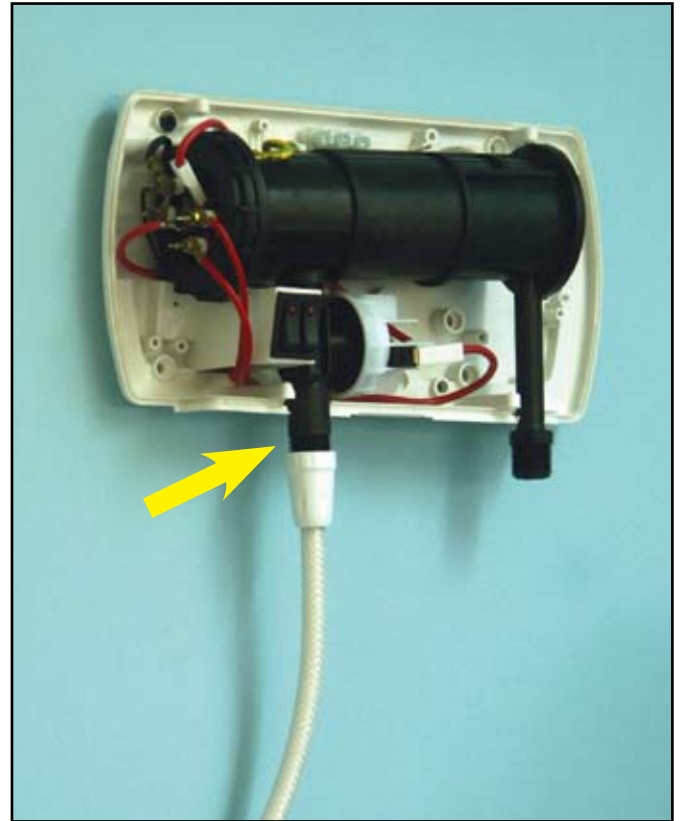
Step 4

Hang the unit on the wall by 4 screws



Step 5

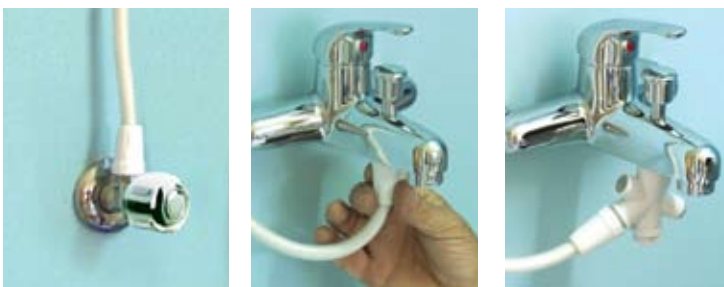
Connect a reinforced hose to the inlet on the left side of the unit. (Don't forget to insert rubbers). Be sure to close it well - No need for tools.



Step 6

Connect the second end of inlet reinforced hose to the water supply (don't forget to insert the rubbers).

3 samples for water supply



Step 7

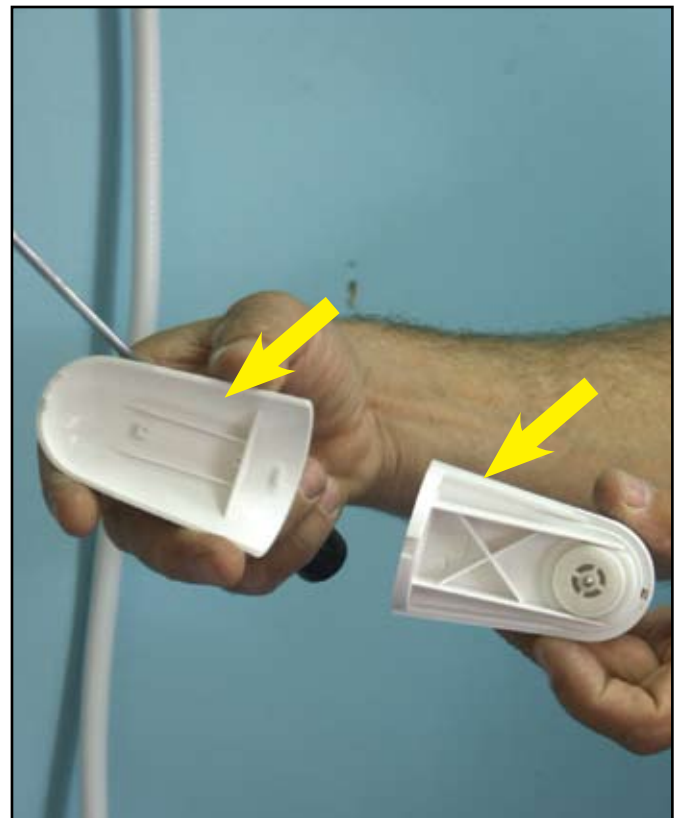
Connect the outlet hose to the outlet water connector. (on the right side).
and the Shower hand to the second end. (don't forget to insert the rubbers)

Warranty: Don't connect any tap to the outlet.



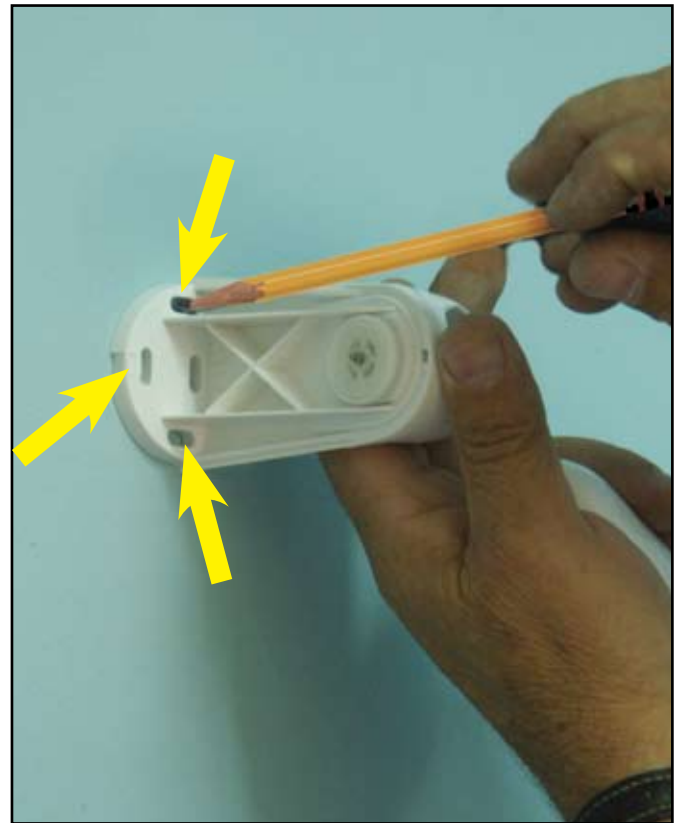
Step 8

Open the shower hand holder cover



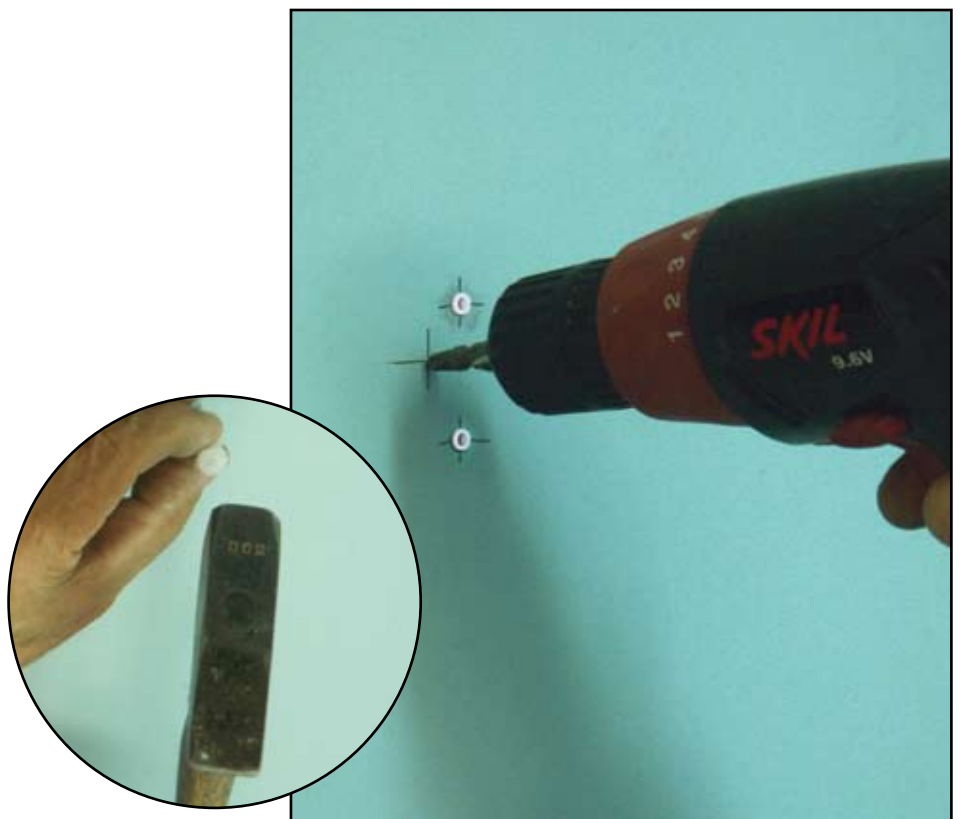
Step 9

1. Place the shower hand holder on the wall on right height.
(Comfortable height for all the users in the house)
2. Sign the 3 holes.



Step 10

1. Drilling 3 holes.
2. Insert plugs.



Step 11

Connect the shower hand holder to the wall using 3 screws



Step 12

Connect the cover of the shower hand holder.



Step 13

Hang the shower hand on the shower hand holder.



Step 14

Open the water supply and the temperature knob (the left knob) and check for leakage.

If there is no leakage - Go on

If there is leakage,
Find the leakage point
and fixe it.

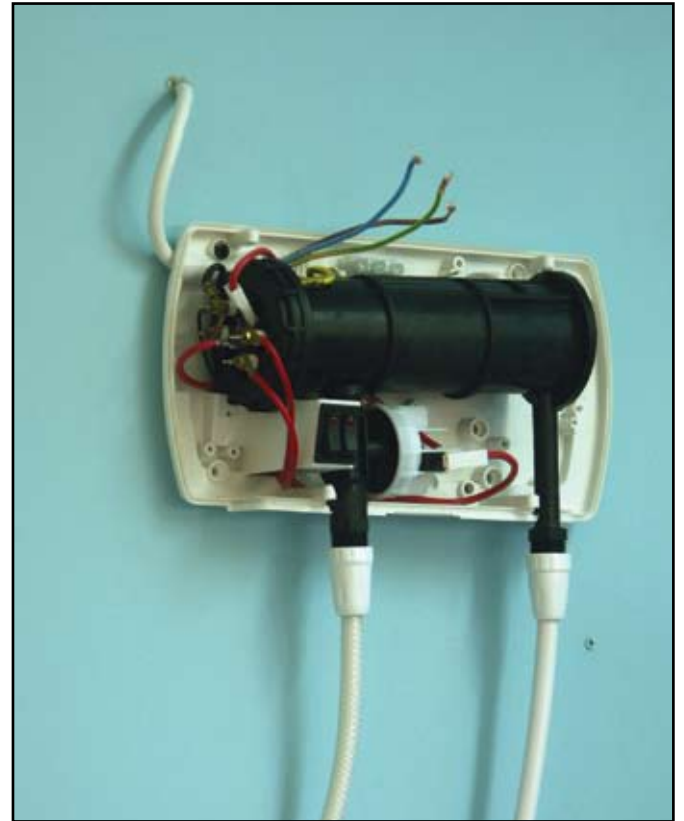
Check again

**Don't continue anless you sure
there is no leakage.**



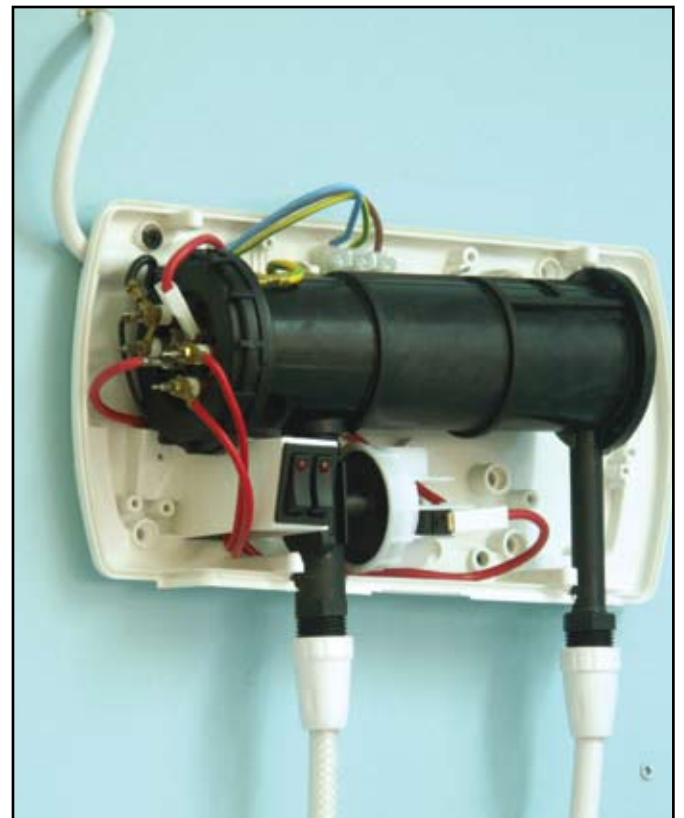
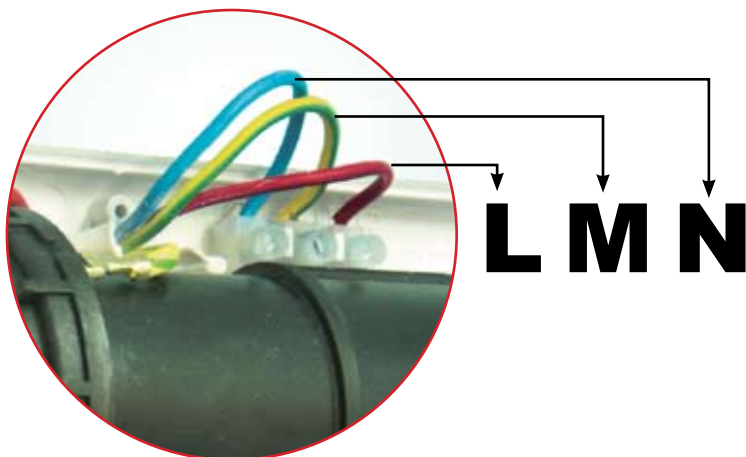
Step 15

Insert the Electric cable through the holes on the back of the unit.



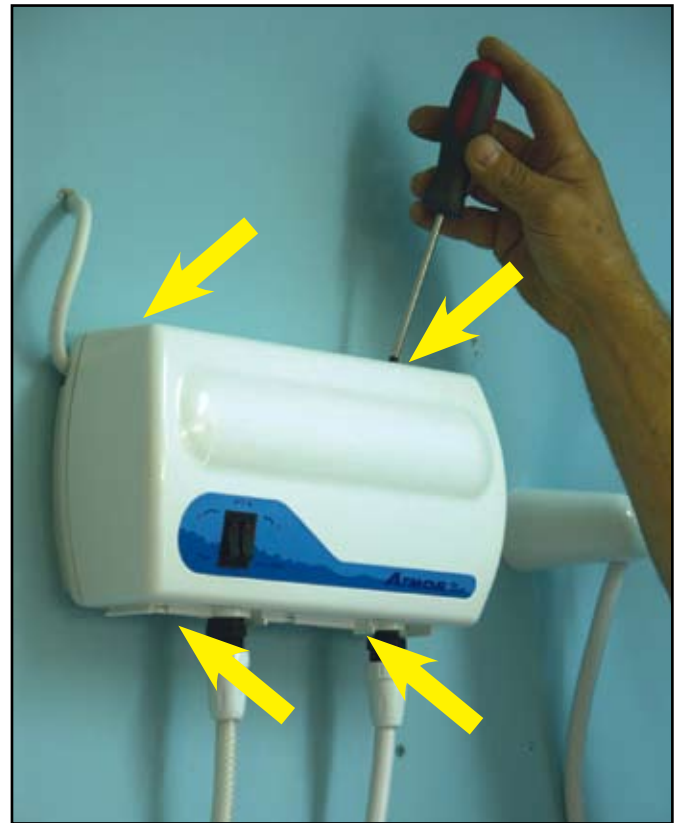
Step 16

Connect the electric cable to the Terminal block.



Step 17

Put the cover of the unit.
Close the cover by 4 short screws



Step 18

Insert the Gray Bottom cover



Step 20

Final view

Option A



Step 20

Final view

Option B

